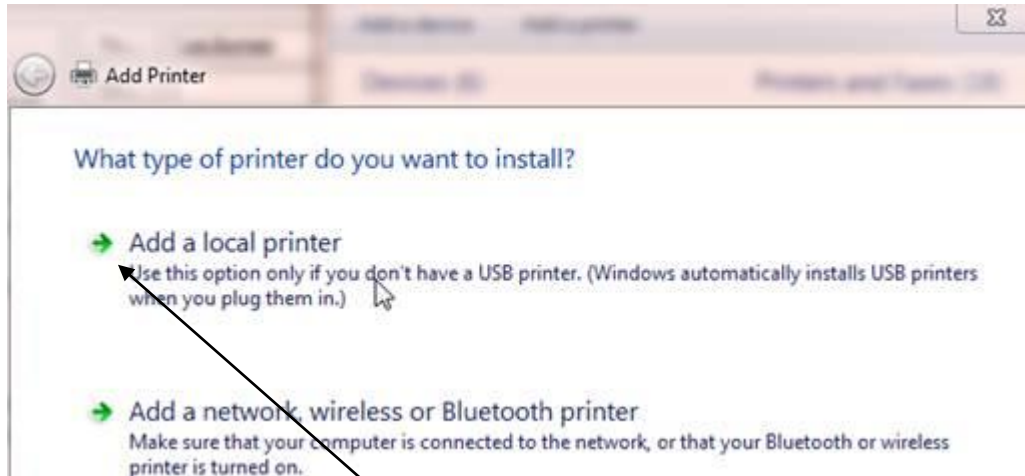
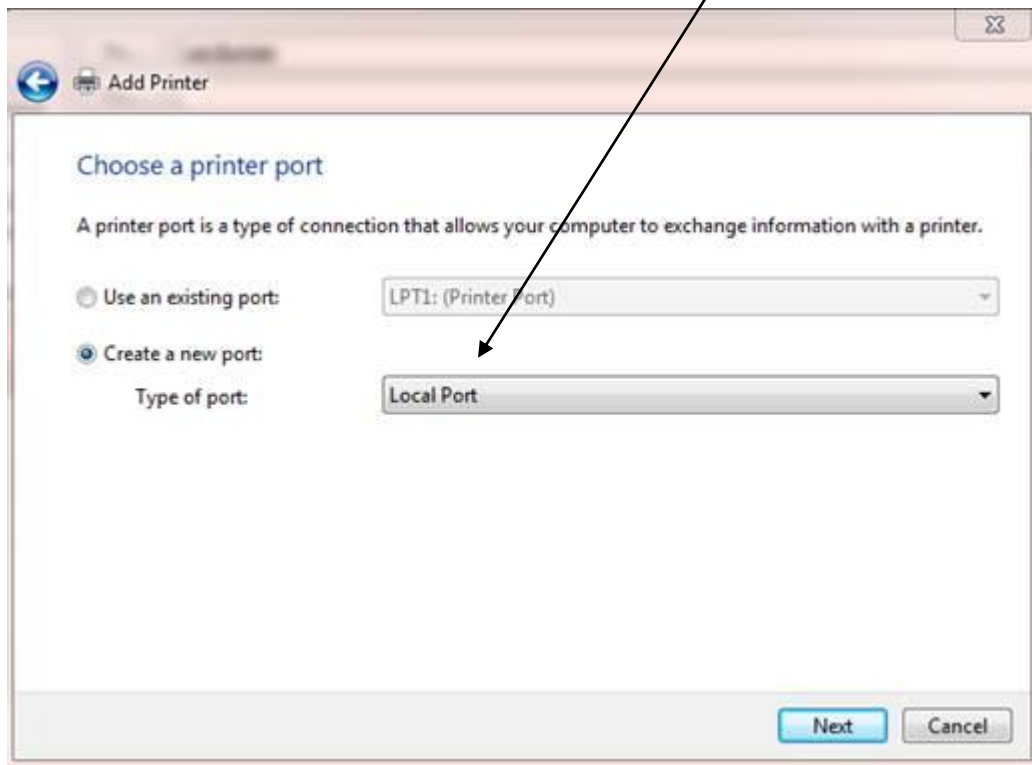


Adding Printers to W7 for NT Pipe

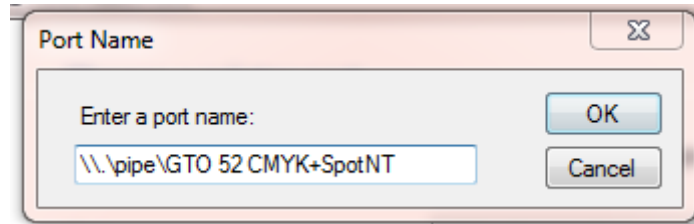


Add a local printer then select LocalPort



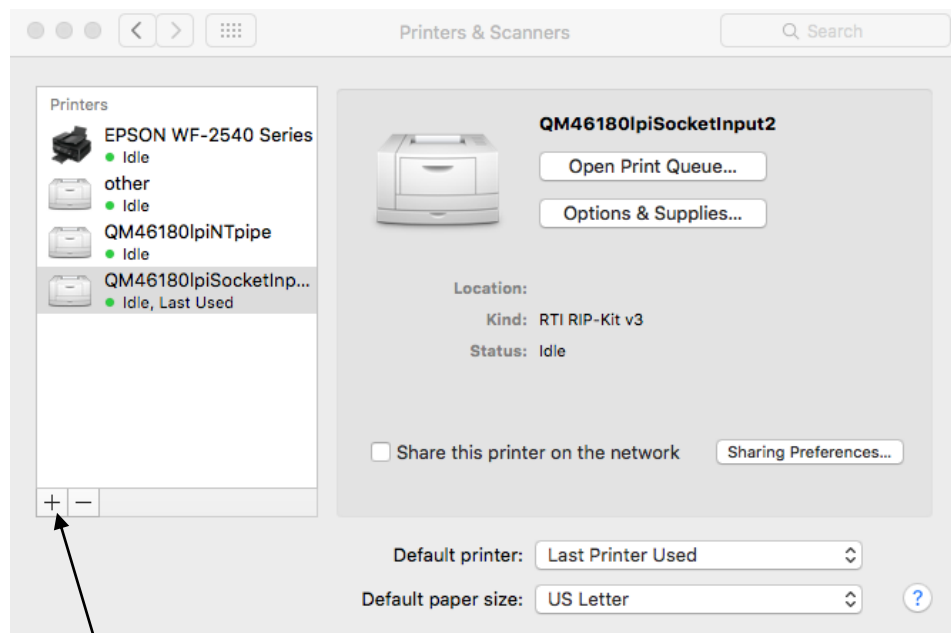
For port name input [\\.\pipe\Then](#) the exact name of you input.

(it's always a good idea to have the naming structure the same. Input/printer/port/pagesetup)



It will then create the printer. It will ask you if you want to share/name it. Be sure to name it the same as the page setup like above in this case GTO 52 CMYK+SpotNT

Adding Printers to a Mac



Go in to your Apple System Preferences the click on Printers, then click on the plus sign.

Select your printer. In this case it's GTO52CMYK_NT. Be sure to select a ppd by selecting "other" to browse to the ppd.

