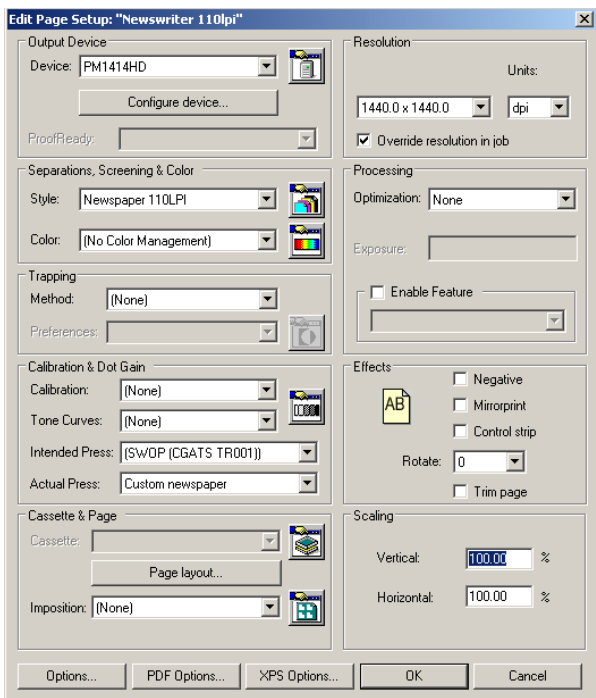
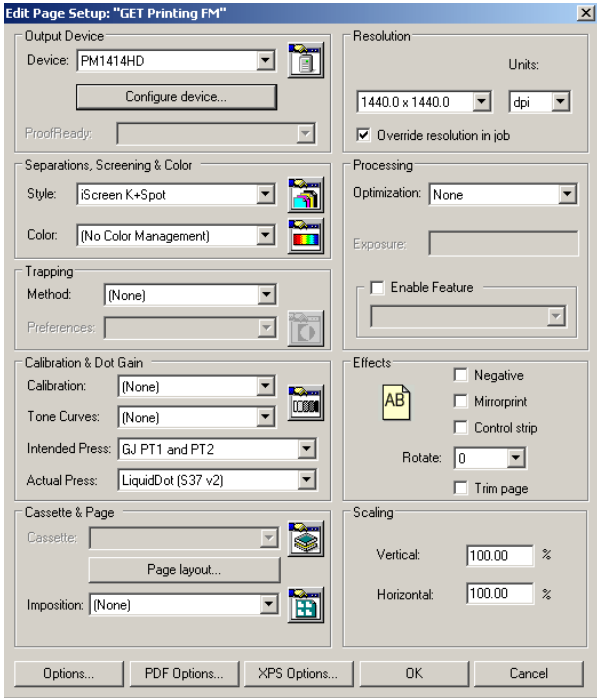


Suggested Page Setup & Device Configurations PW3000 & 8000

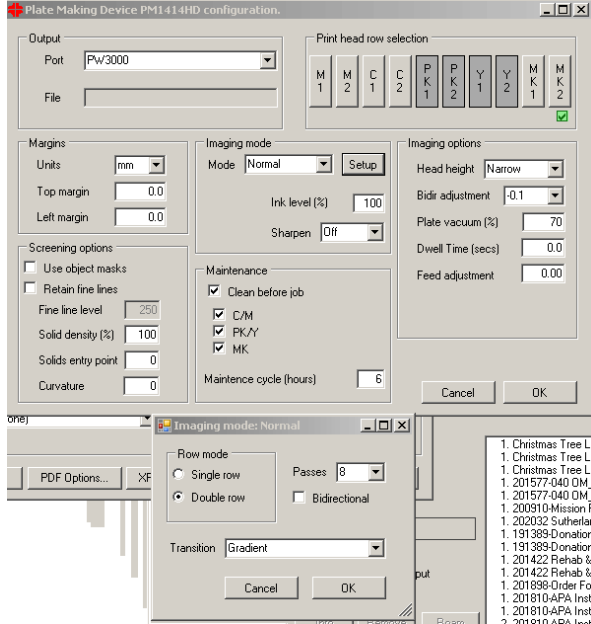
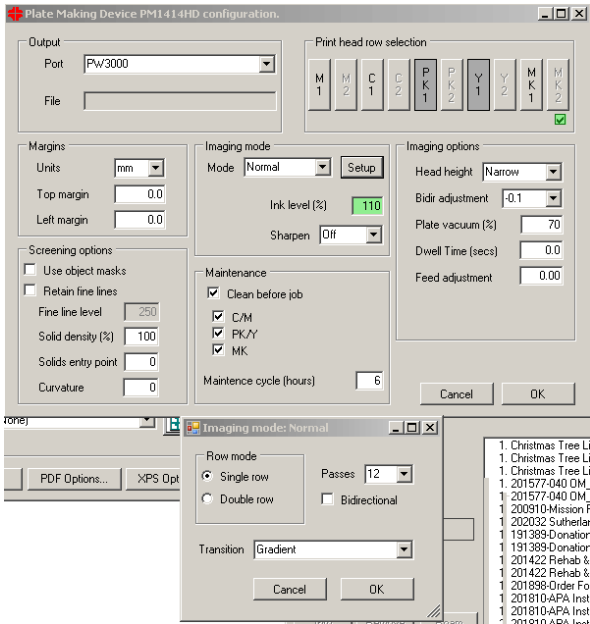
iScreen (Stochastic)

AM Screening up to 180 LPI



I prefer using S12 Imaging Mode using PK1 & Y1 at 110 – 120% ink limit

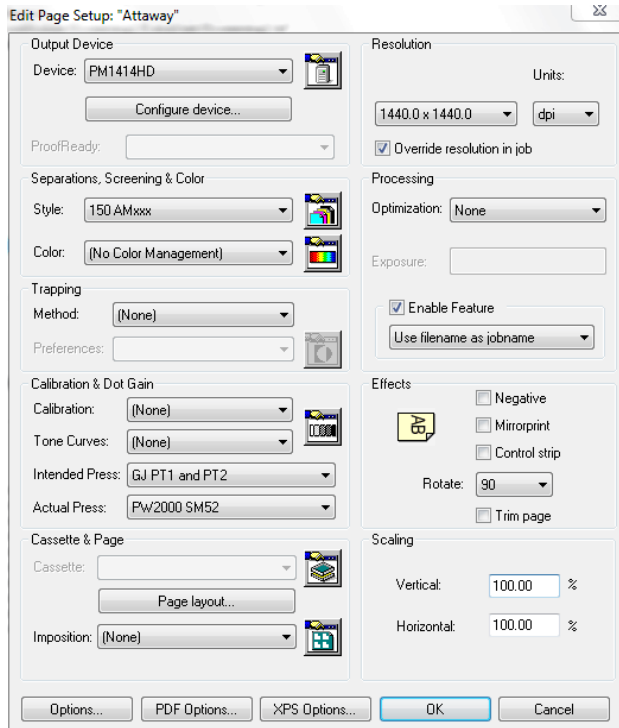
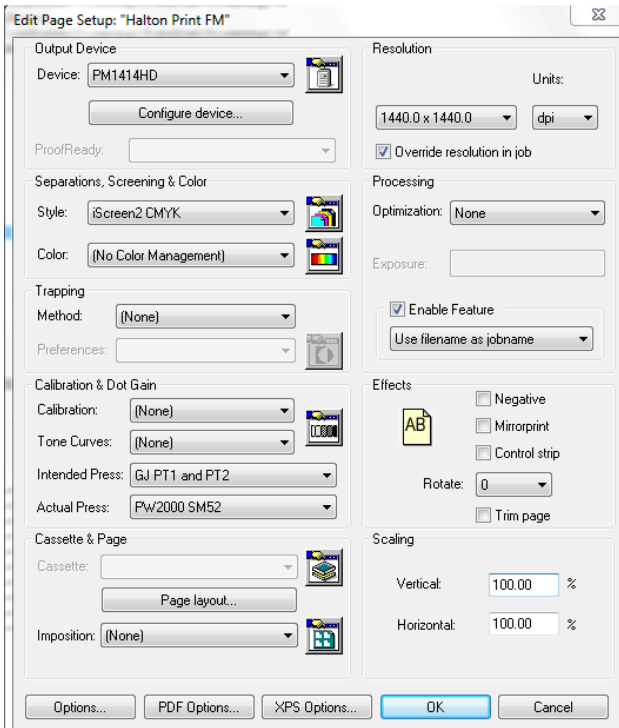
Another option which is a little faster is D8 using all Y & PK channels about 100% ink limit



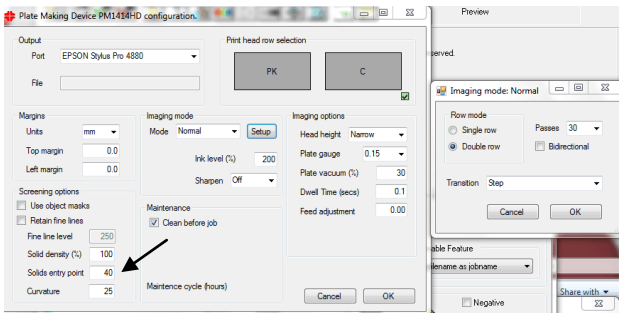
PW2000

iScreen (Stochastic)

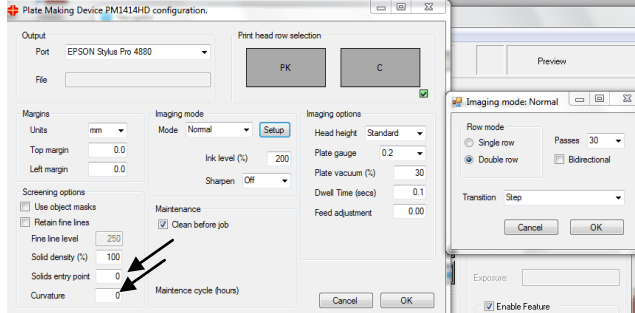
AM Screening up to 180 LPI



iScreen (Stochastic) Device setup



AM Screening Device setup



PCU Parameter Settings

PlateWriter 2000

LPA

ICU 3.3.0, HW version: 2

DAO=0 DFS=50 DHS=28 DHB=-55
1AL=-38 1BE=102 1SE=100 1FF=100 1RF=100 1GR=17
2AL=-31 2BE=110 2SE=100 2FF=100 2RF=100 2GR=18
3AL=-23 3BE=85 3SE=100 3FF=100 3RF=130 3GR=19
GRI=5 GRA=30 GRD=250
FRS=80 FRE=130 RRS=0 RRE=200 GAP=200
CUR=8200 STT=60 TSP=15 BEE=1 AUT=0 IRS=50
REG=100 IDS=1
THS=28 DFT=20 DHT=10 DST=0 TSS=28 DSS=15

PlateWriter 3000

LPA

ICU 3.7.1, HW version: 4

DAO=0 DFS=100 DHS=22 DHB=0 PHP=1
1AL=-38 1BE=92 1SE=100 1FF=100 1RF=100 1GR=17
2AL=-31 2BE=95 2SE=100 2FF=100 2RF=100 2GR=18
3AL=-23 3BE=90 3SE=100 3FF=100 3RF=130 3GR=19
GRI=5 GRA=30 GRD=250
FRS=80 FRE=130 RRS=0 RRE=200 GAP=200
CUR=8200 STT=60 TSP=15 BEE=1 AUT=0 IRS=50
RGS=3 REG=30 IDS=2
THS=25 DFT=15 DHT=10 DST=0 TSS=25 DSS=22
PDT=300

PlateWriter 8000

LPA

ICU 4.3.1, HW version: 4

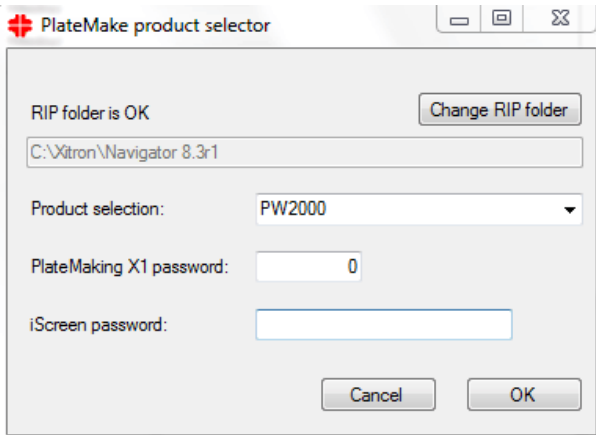
CFG=3 OVS=2 IDS=2 BWS=3 RGS=2 PHP=1
1AL=160 1BE=170 1FF=140 1RF=130 1GR=17
2AL=160 2BE=170 2FF=140 2RF=130 2GR=17
3AL=160 3BE=180 3FF=140 3RF=130 3GR=17
4AL=170 4BE=135 4FF=140 4RF=130 4GR=18
5AL=150 5BE=80 5FF=140 5RF=130 5GR=18
6AL=150 6BE=40 6FF=140 6RF=130 6GR=19
FRS=100 FRE=200 RRS=200 RRE=300
PWB=-230 STT=60 PWC=80 TSA=450
GRI=5 GRA=30 GRD=250
DHS=26 DSS=26 DHB=0 THS=30 TSS=30
DHT=1800 DST=1800
DFS=100 DFT=10
REG=30 PDT=300
BWE=50 BWR=80
TPW=2500 OPW=2000 UPW=500 DPW=500
BEE=1 IRS=50 DAO=0

*****NOTE*****

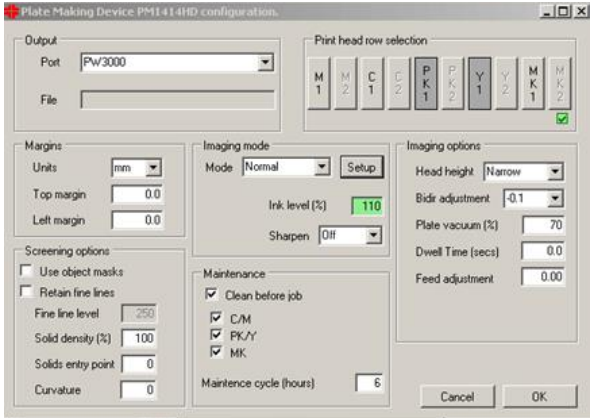
If you are installing a PlateWriter 2000 but see a device configuration for a PlateWriter 3000 you will need to launch the PlateMaker Product Selector. (First, close the RIP)

To do that follow this path to find it. *C:\Xitron\Navigator 8.3r1\SW\Devices\PMX2\Misc*
Double click on *EpProdConfig.exe*

This is the window that will open. Add the PlateMaking X1 password (IJPMX1) and then add the iScreen password, then launch the RIP.



PW3000/8000



PW2000

