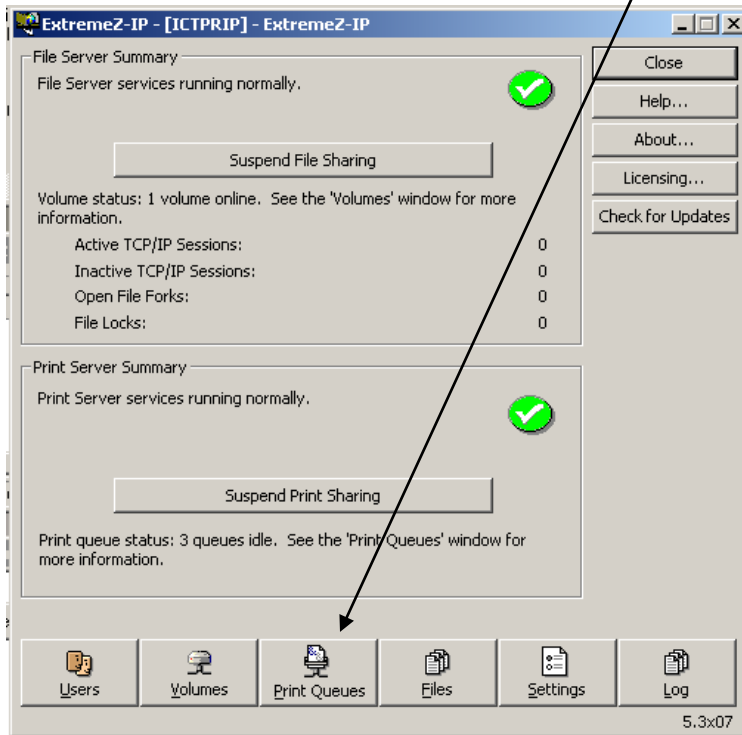


How to set up ExtremeZ for creating Bonjour printers

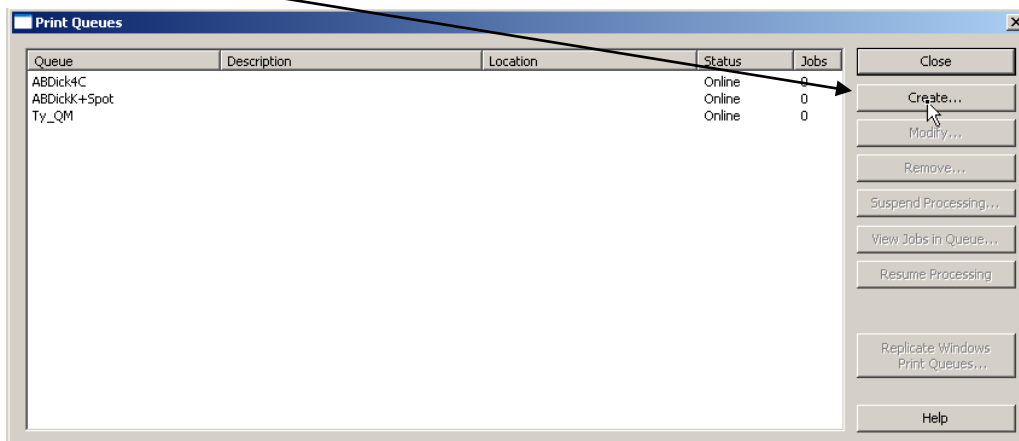
First you will need to create a Hot Folder, then set up inputs in the Xitron RIP as pool folder inputs.

Launch ExtremeZ Administrator, and then select Print Queues

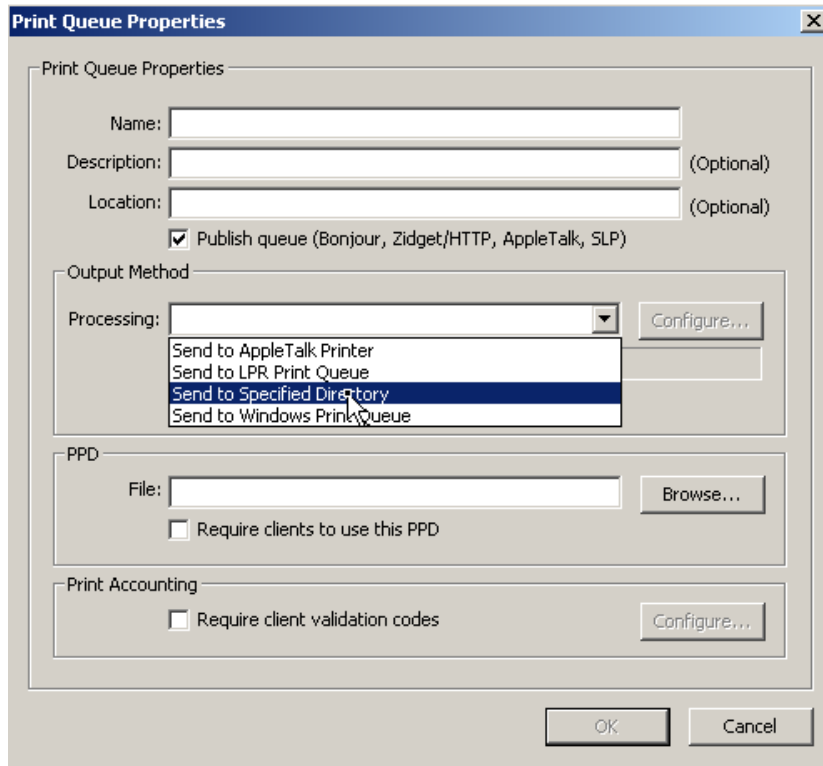


GLUNZ & JENSEN 

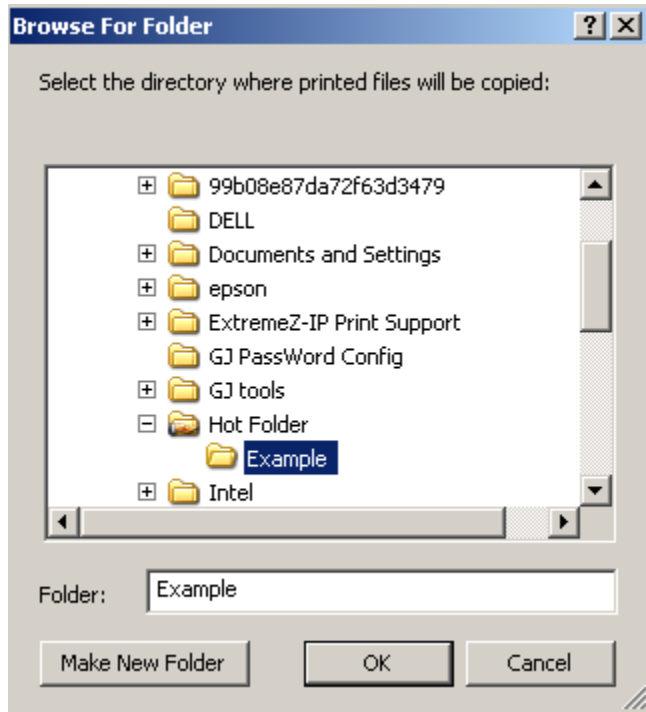
Then, click on Create



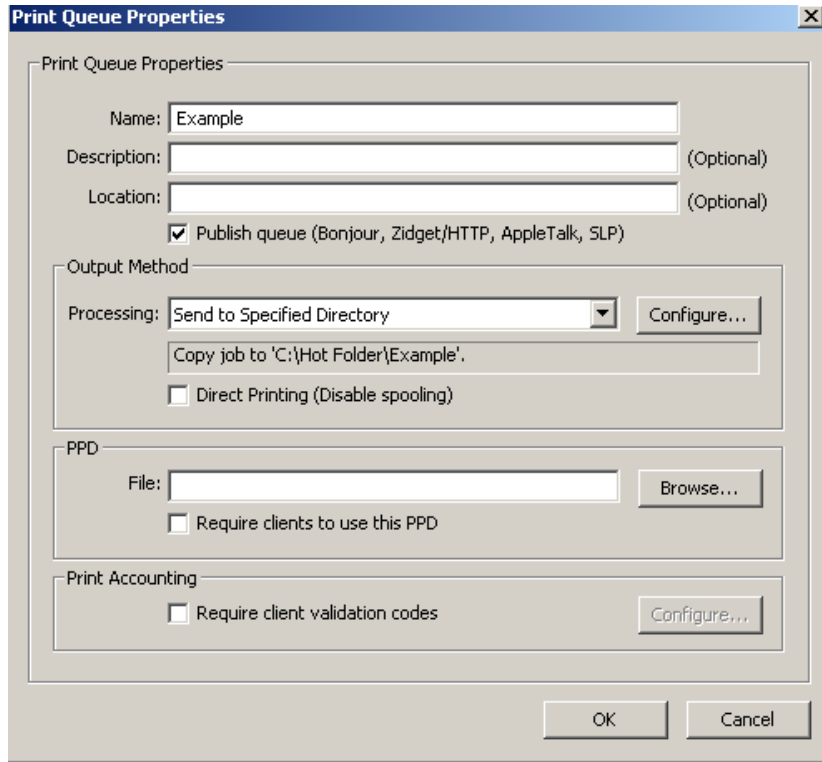
From the **Processing** drop down menu select **Send to Specified Directory**



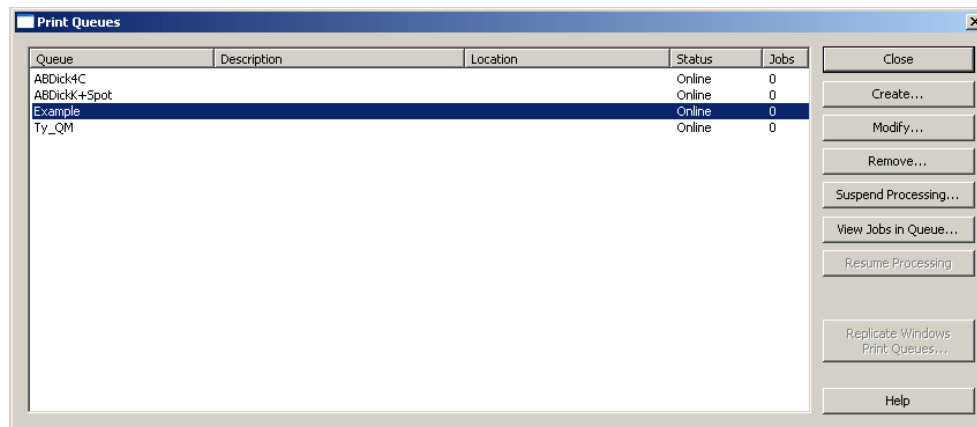
Then browse to the Hot Folder you have created. In this case we'll name it **Example**



Next you will want to name the Print Queue the same as your Hot Folder



After that you will now see your new Print Queue and it will also become a Bonjour printer on the network.



If the work station is a Mac, simply add the new printer. If it is a PC you will need to install the Bonjour For Windows utility you can get from Apple's web site for free. <http://support.apple.com/kb/DL999>

There you will launch the application, see your Bonjour printer and add it. You will then have to go back to your system printers and go to the properties to assign the appropriate print driver. It will default to an HP print which will not allow custom page sizes. Just use our PlateWriter2000.PPD and you're done.