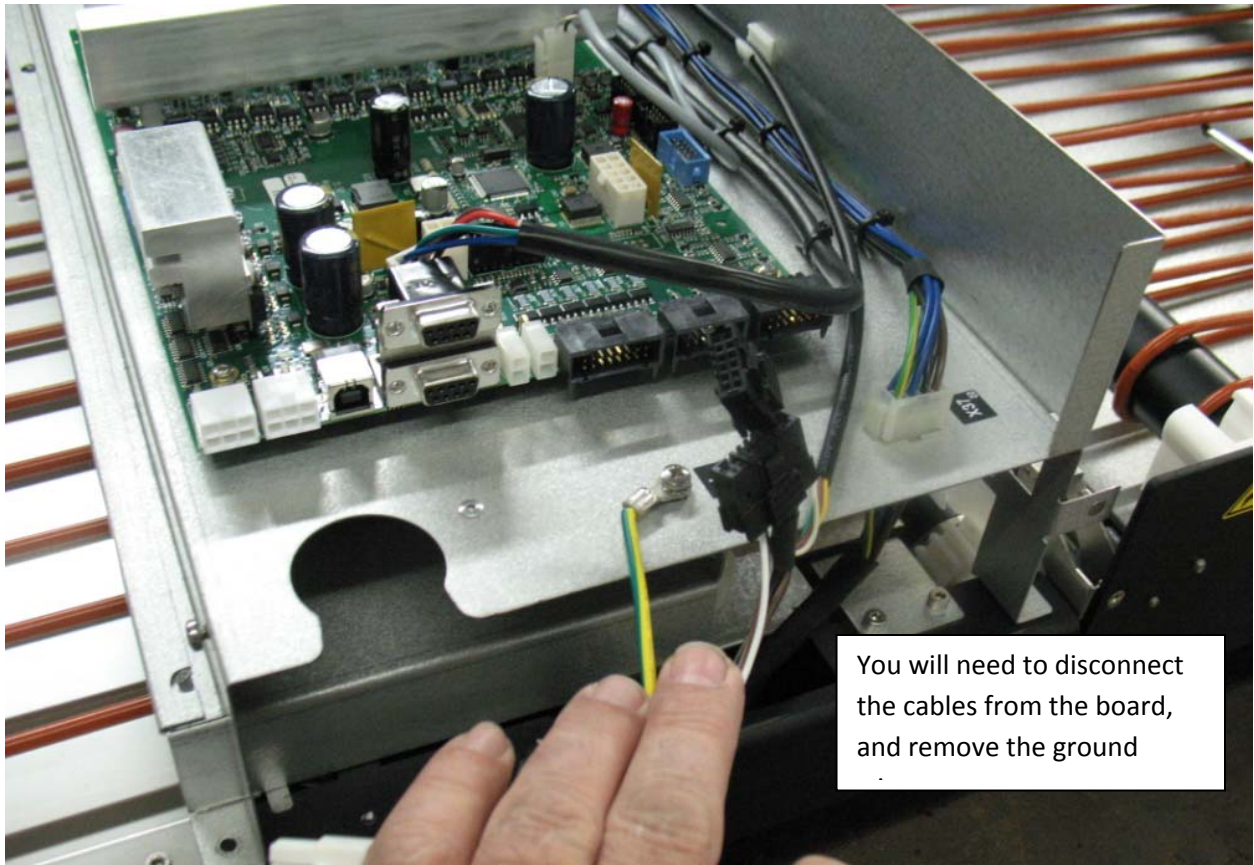


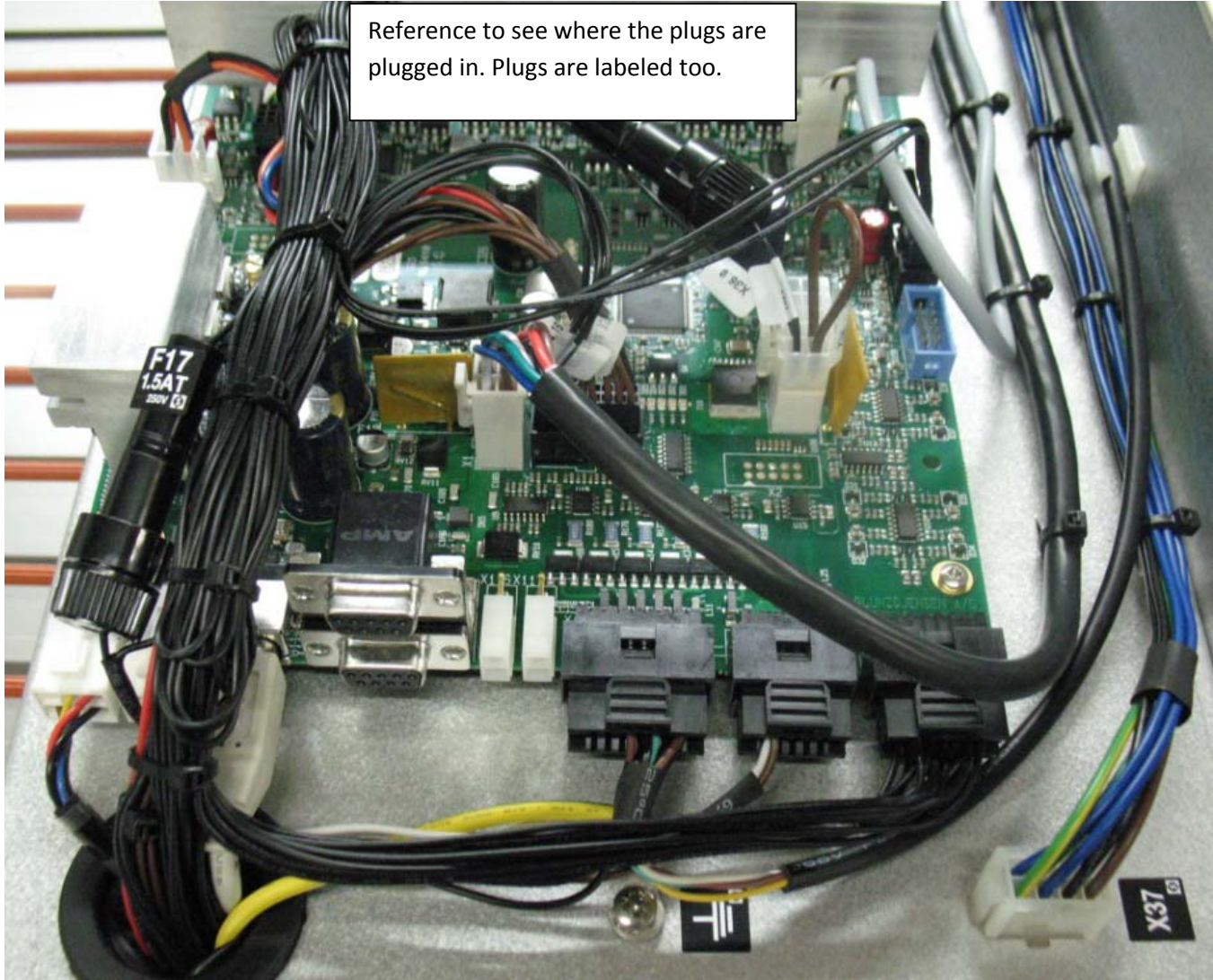
You'll need to remove the hoses so use this as a reference to see how they're routed. Make sure you mark which is gum and which is water.

Gum

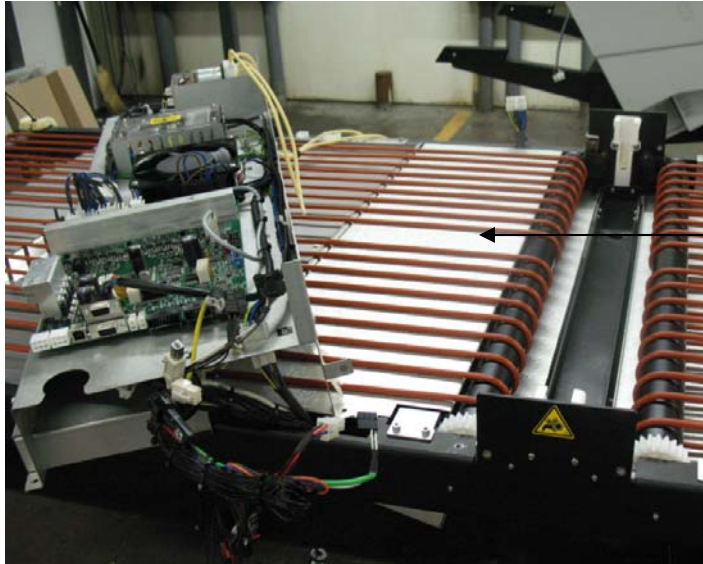


You will need to disconnect the cables from the board, and remove the ground

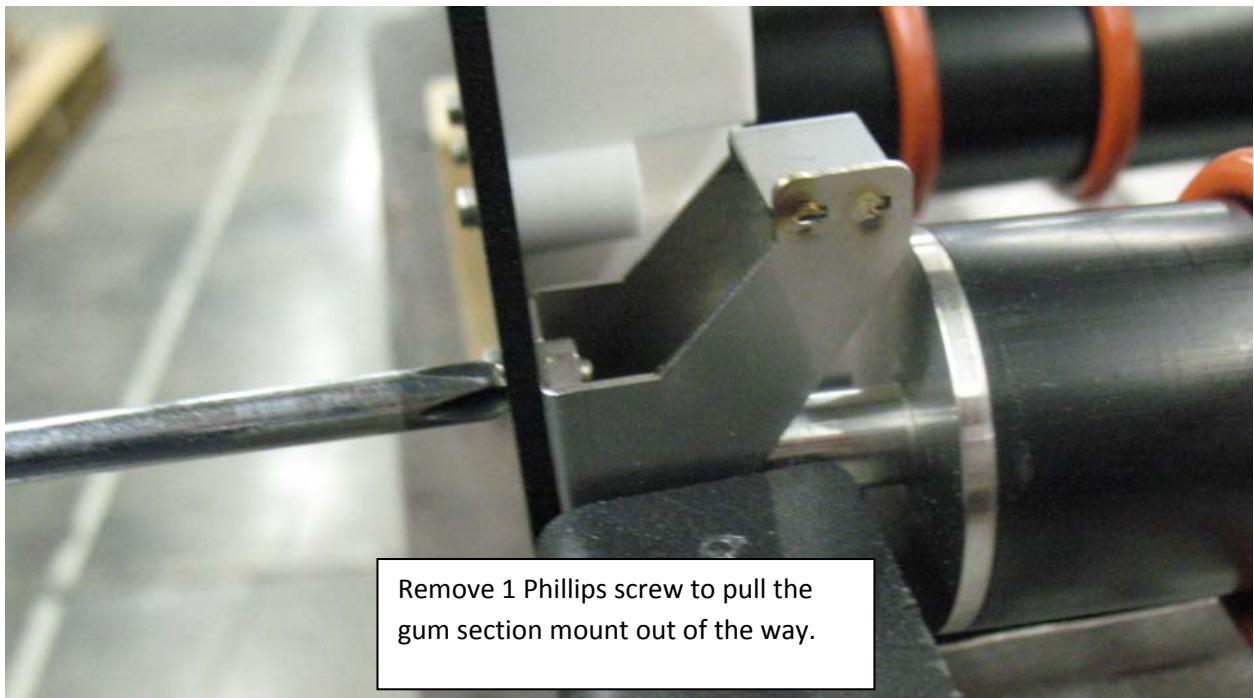




Reference to see where the plugs are plugged in. Plugs are labeled too.

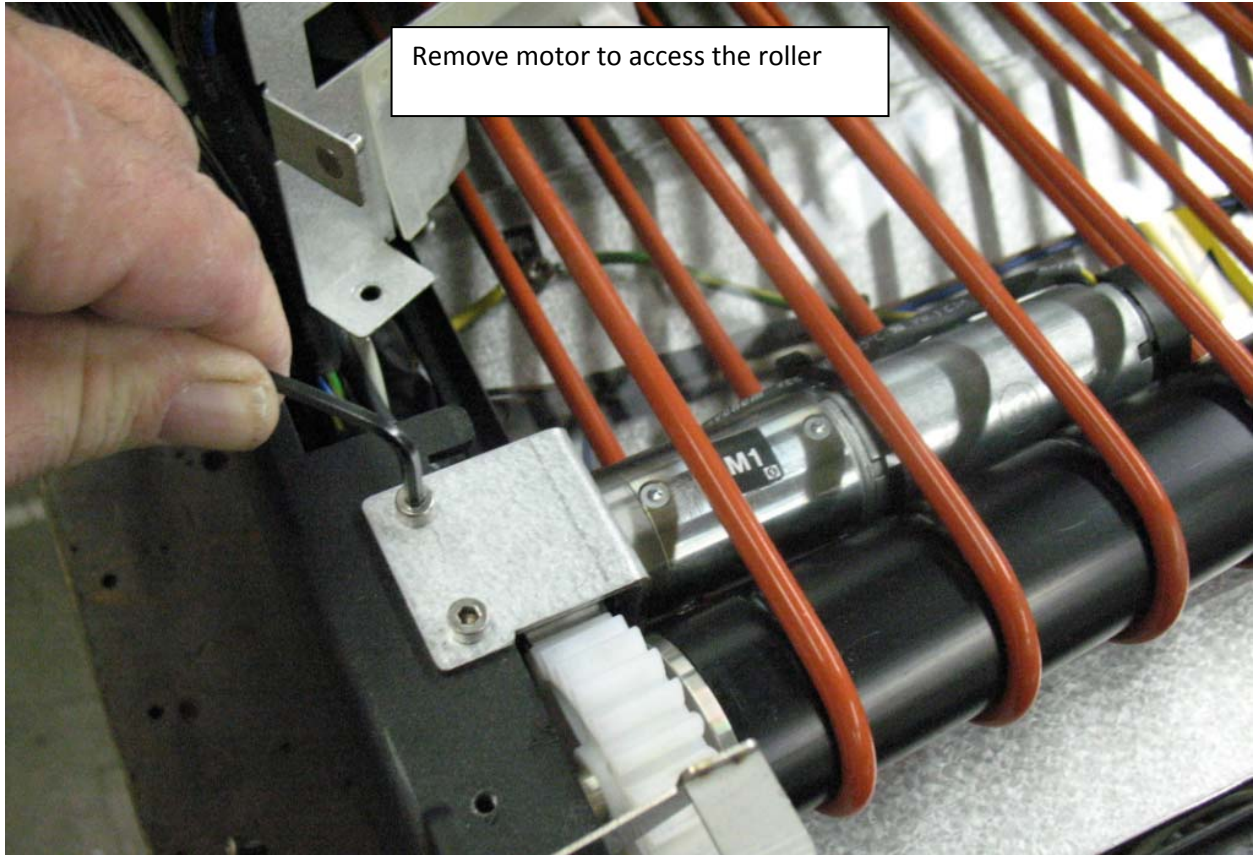


Move the electronics shelf out of the way then slide out panel.

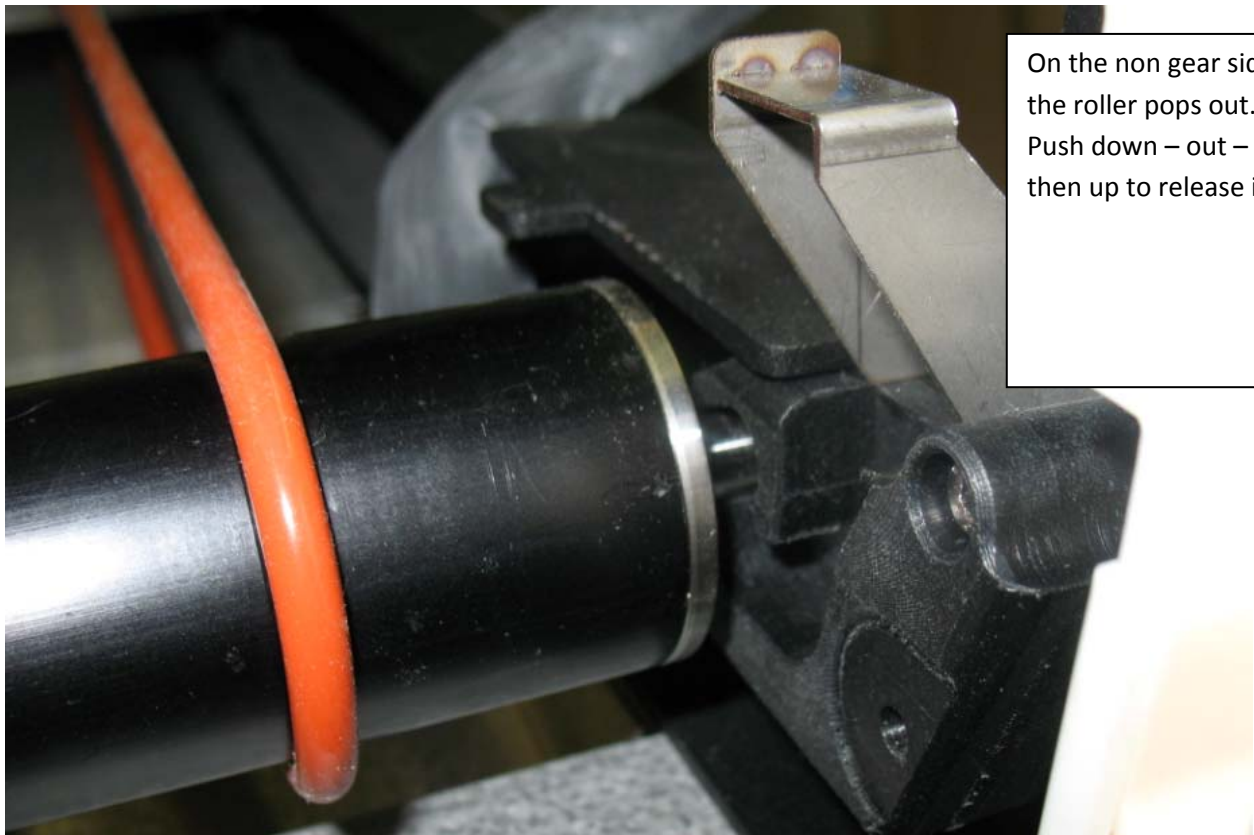


Remove 1 Phillips screw to pull the gum section mount out of the way.





Remove motor to access the roller



On the non gear side  
the roller pops out.  
Push down – out –  
then up to release it.



Now slide the roller out, and replace.