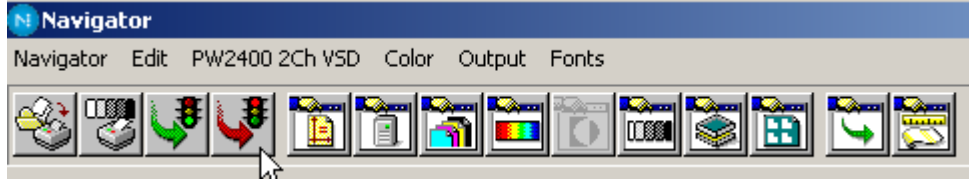
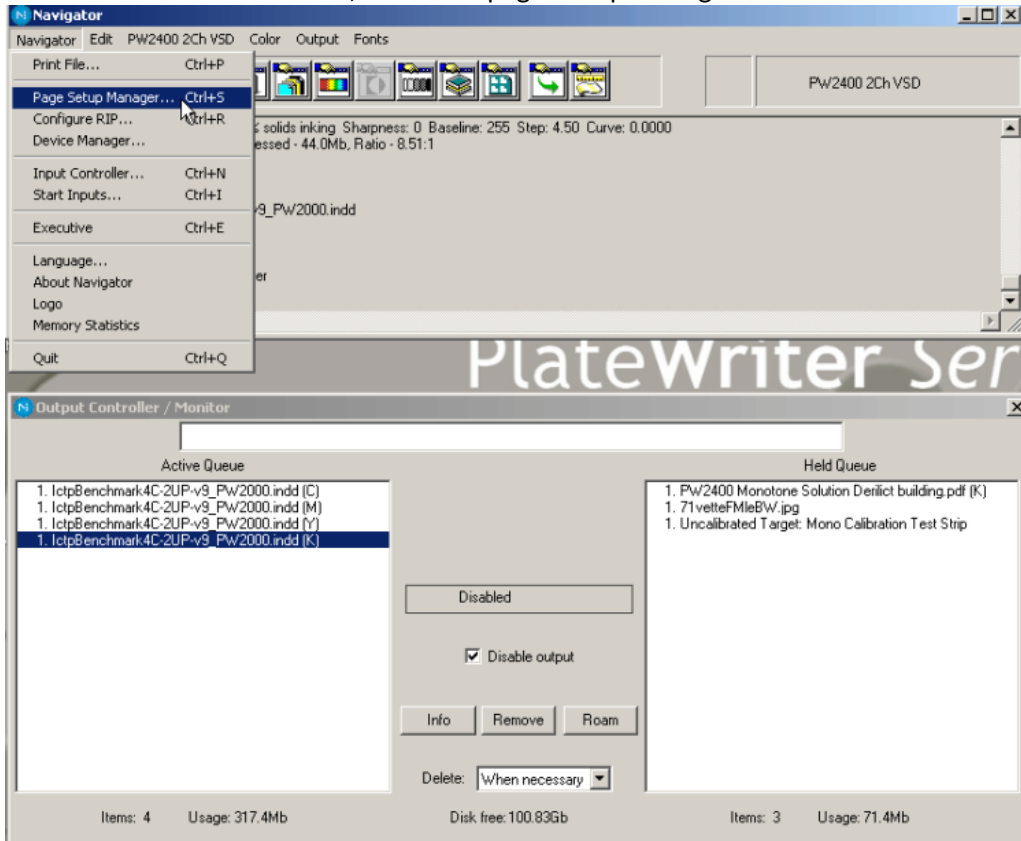


How to add crop marks.

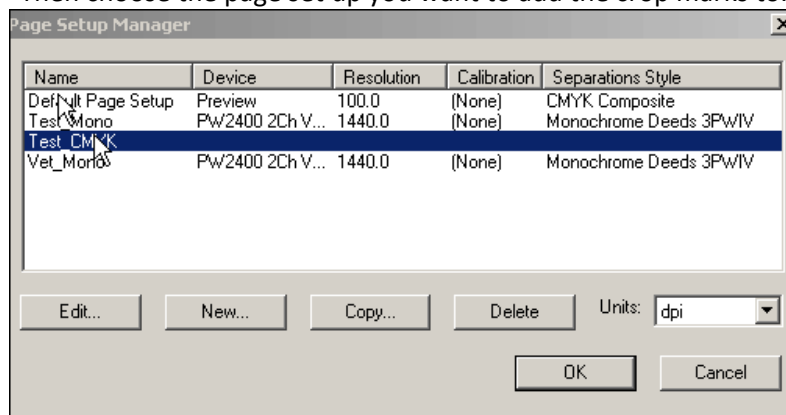
First, turn the inputs off by clicking on the red traffic light at the top of the RIP.



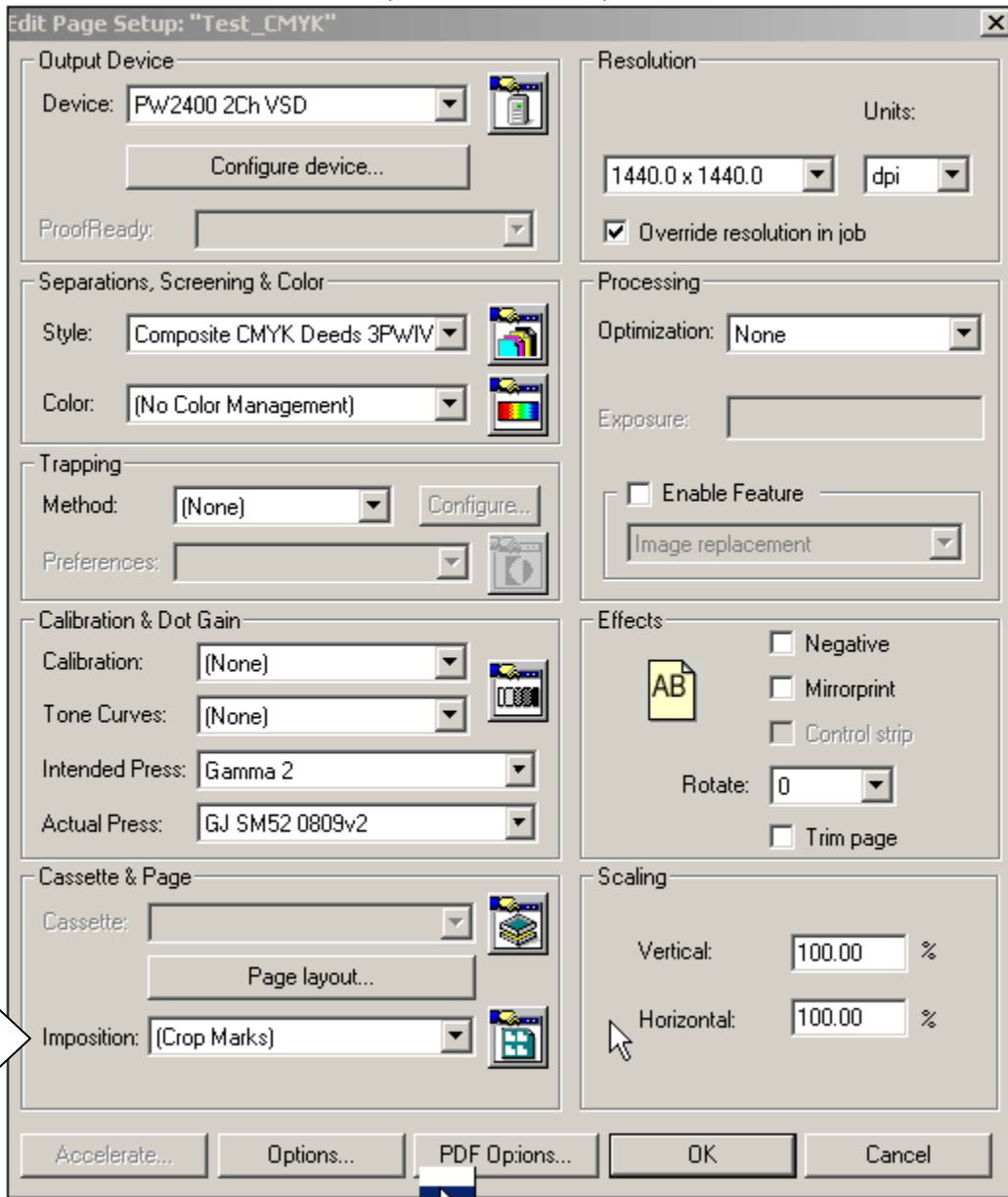
Then, select the page set up manager.



Then choose the page set up you want to add the crop marks to.

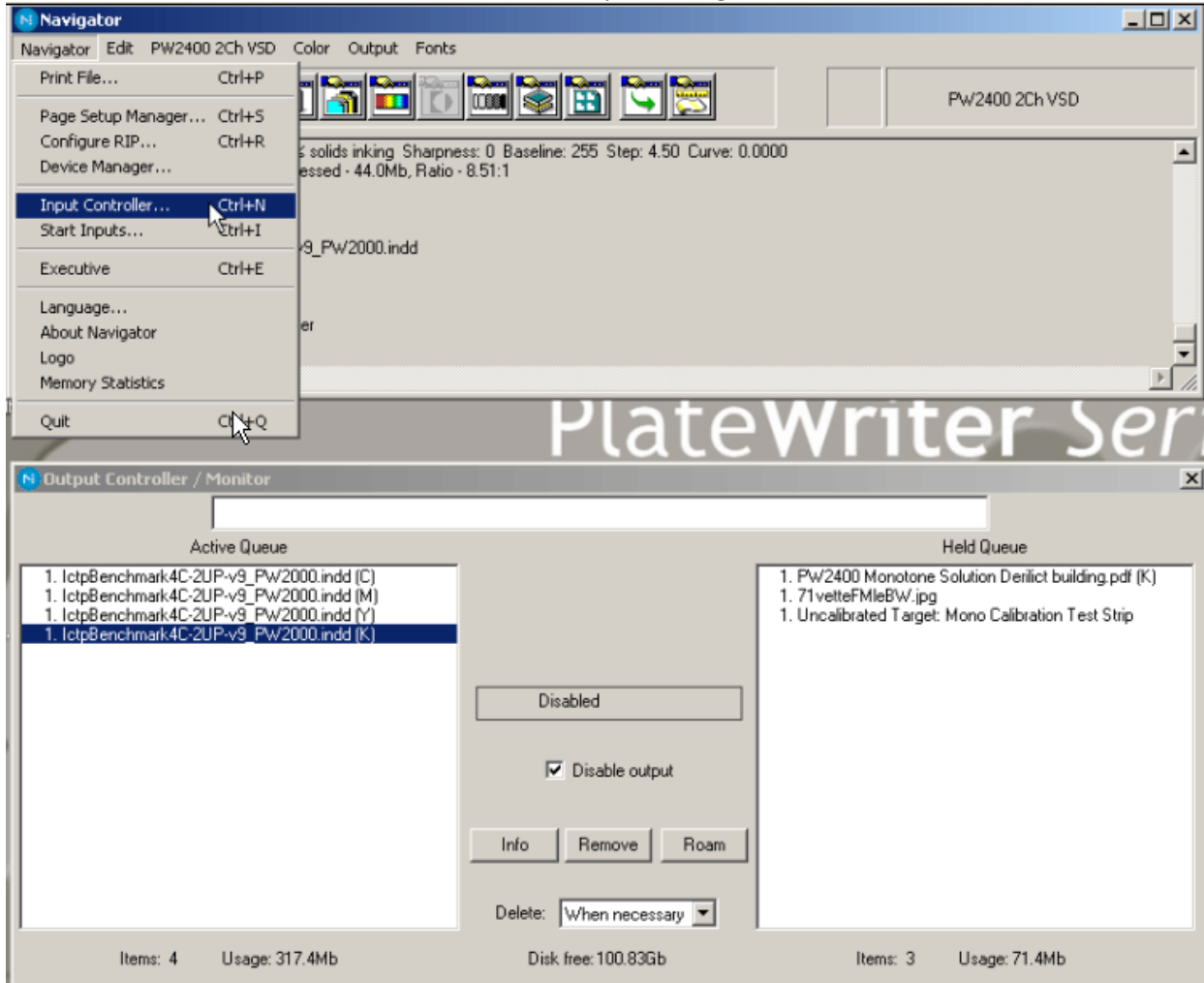


Select "crop marks" in the imposition field.

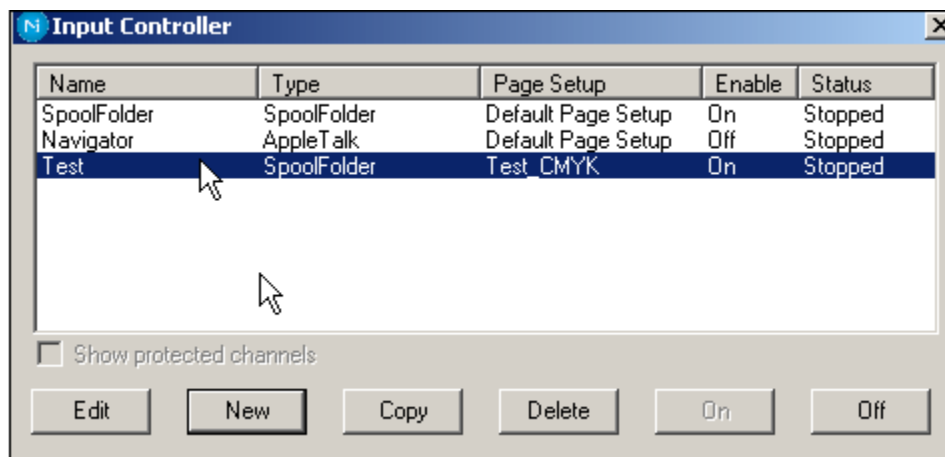


How to keep the PDF's in a "Complete" folder

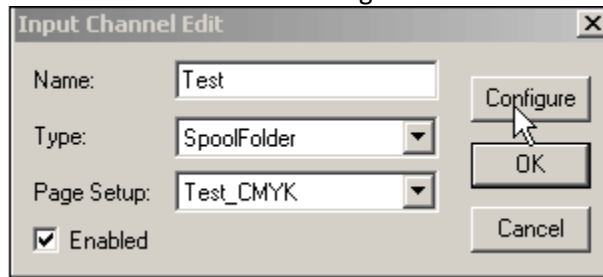
Go to the input manager



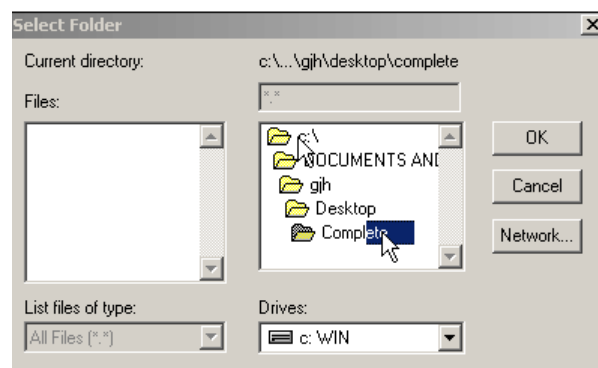
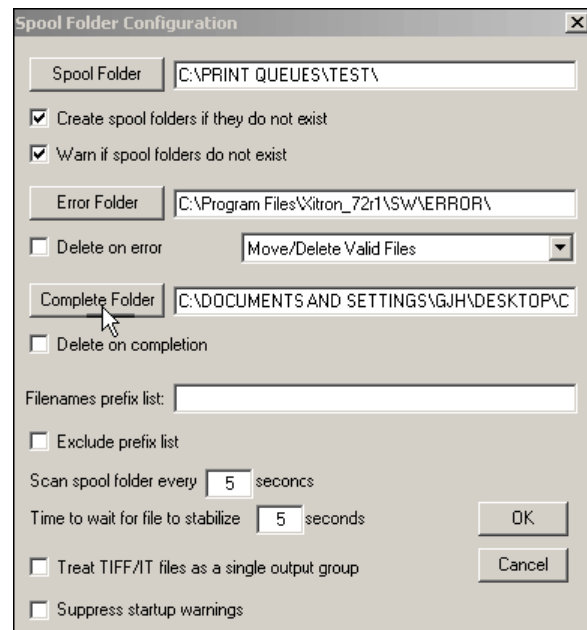
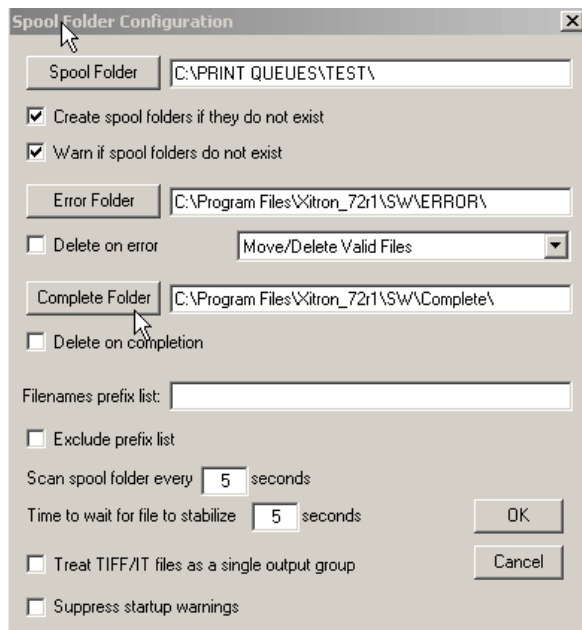
Select the input you want to edit.



Click on "configure".



Look where it says "complete folder" The path there is set by default. You could add a folder to your desktop and point to it like in the last screen shot.



Remember to start your inputs when you're finished by clicking the green traffic light.

