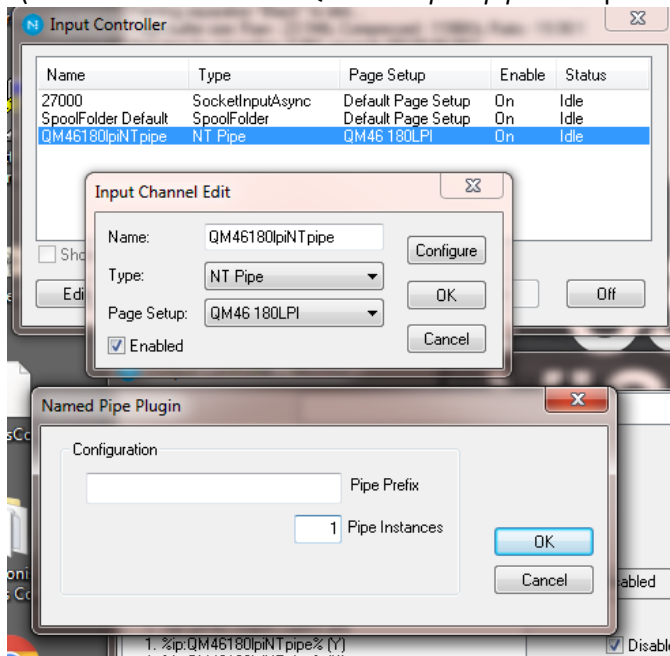




## Creating NT Pipe Input

1. Build you NT pipe input in Navigator. Make sure to take out any pipe prefix and change instances to 1. (in this case we will use *QM46180lpINTpipe* for a printer name for example purposes)



2. Start that input
3. Make a new windows printer
4. Add a new local port with this syntax `\\.\pipe\QM46180lpINTpipe`
5. Choose the ppd driver when it asks
6. Share the printer with the same name
7. Go to Mac or PC and add the shared printer