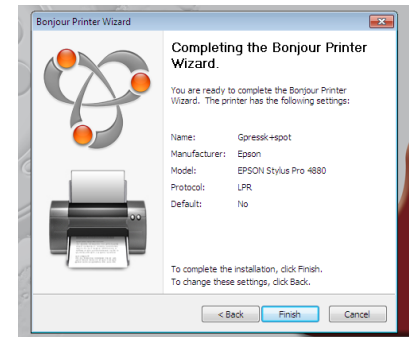
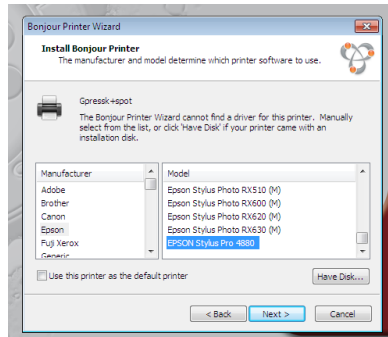
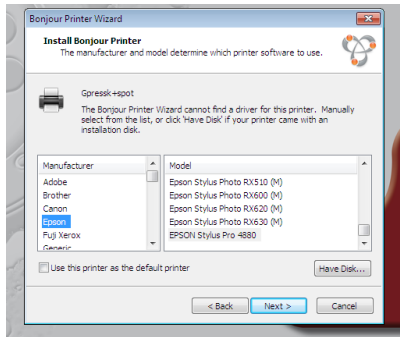
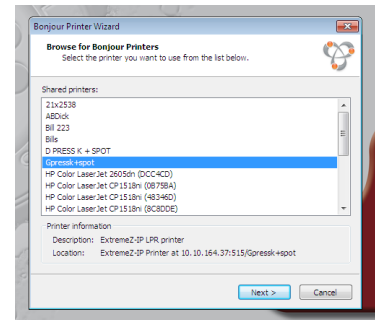
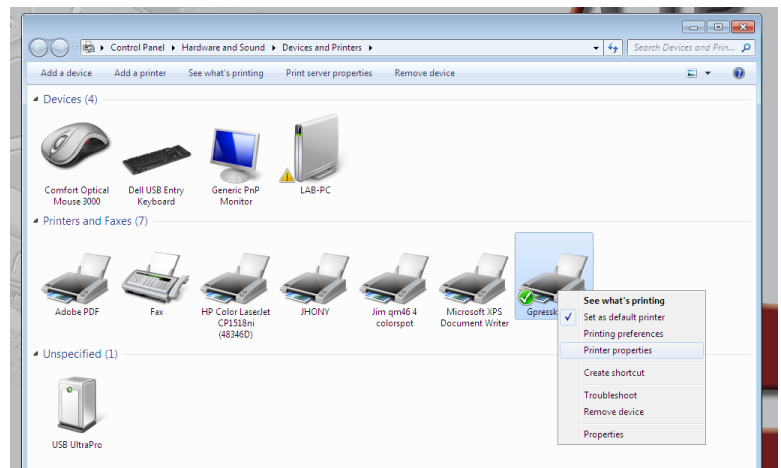


# Installing a Printer on a Windows 7 machine

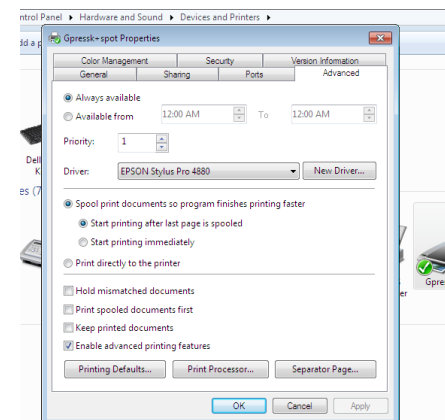
1. Install Bonjour on the Windows 7 machine
2. Open Bonjour and select your printer name
3. Then choose EPSON and one of their printers and then click Finish



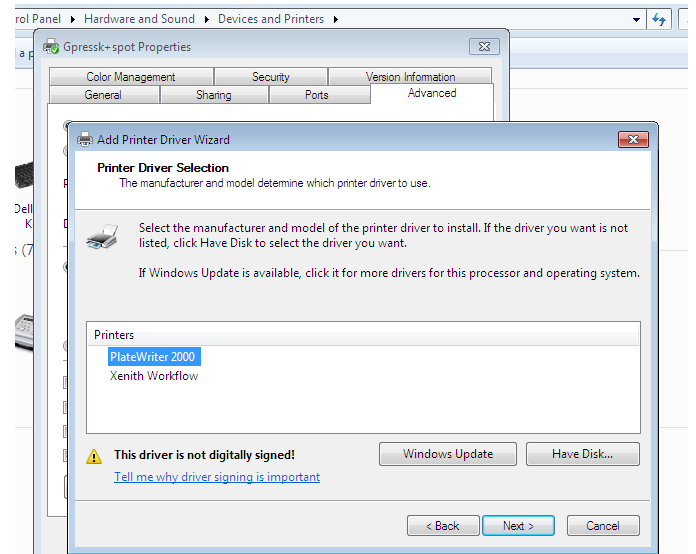
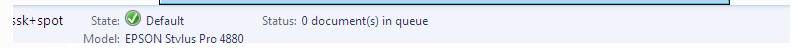
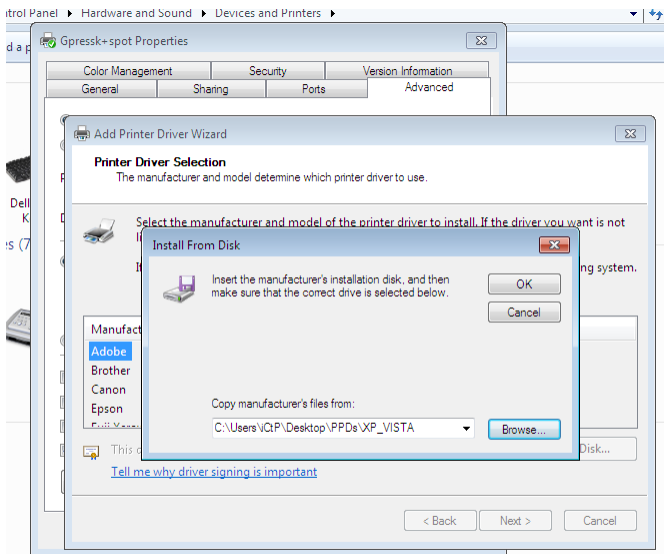
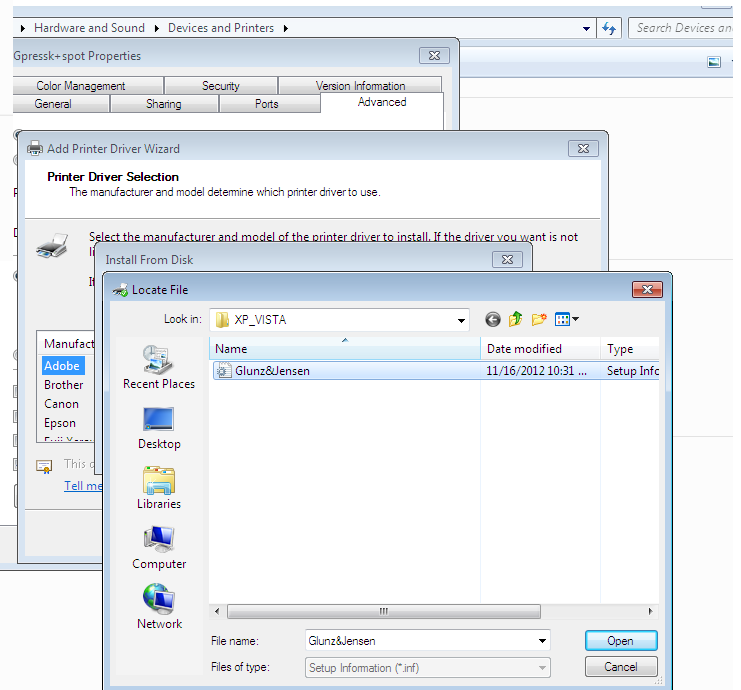
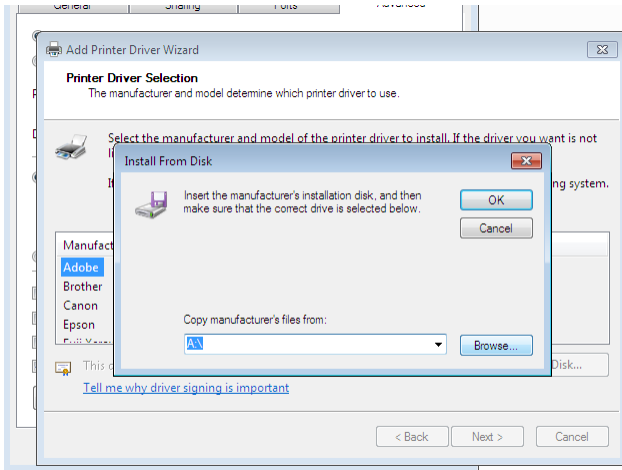
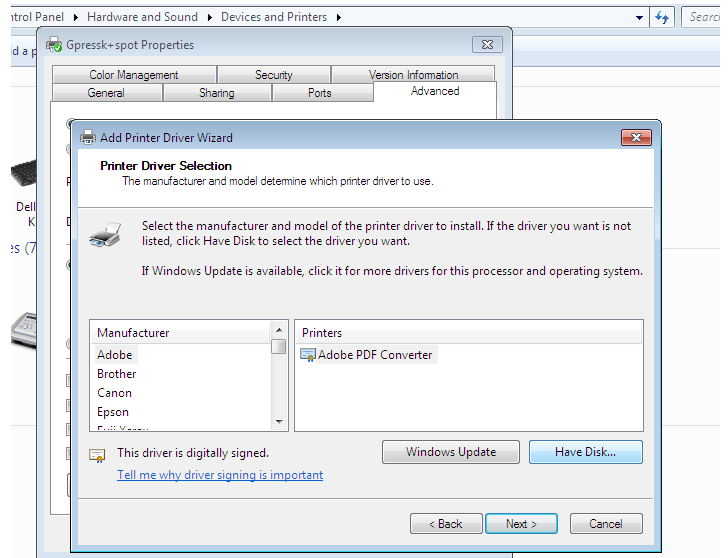
4. Then open Device and Printers and choose your printer. Then Right click and go to Printers properties.



5. Choose Advance and click New Driver. Then using the Add Printer Driver Wizard Click Next

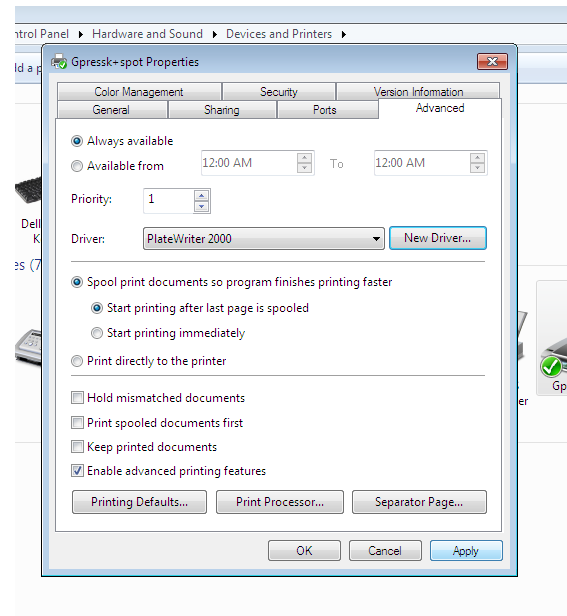


6. Click Have Disk and select the PPD from the install disk under files GJ tools.
- Click on the PPDs XP Vista then the Glunz and Jensen.inf file then click Open then OK



7. Then Click Next and Finish

8. Then Click Apply and OK



9. Now from your layout program you can choose print and see your Printer for the PlateWriter in the printer option.

